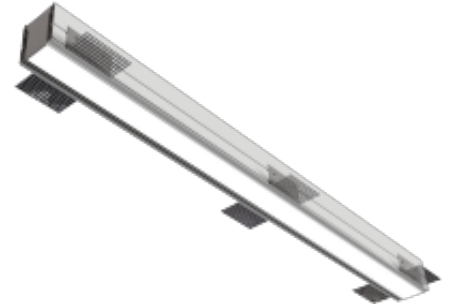


## Vector RCD TL

The Vector Recessed Trimless LED is a continuous trimless linear luminaire available in lengths ranging from 574mm to 4488mm. The luminaire can also be used as a system product with optional joining kits and corner pieces. Please contact us for a bespoke solution. The fitting is made from extruded aluminium with a (Tpa) Lens to achieve a highly efficient linear profile with integral gear. The Vector is also available with an integrated emergency kit.



- Continuous aluminium profile
- Linkable modules
- Instant on - no flicker
- Environmentally Friendly - No mercury or lead enters the environment
- No RF and electronic magnetic interference
- Over 50,000 hours life span

### General

<b>Dimensions</b>	Ranging From  60 x 90 x 574mm- 60 x 90 x 4,488mm
<b>Installation</b>	Plaster In
<b>Cutout</b>	79mm Width
<b>Voltage</b>	100-240Vac 50/60Hz
<b>Certification</b>	CE, ROHS
<b>Warranty</b>	5 Years

### Performance

<b>Colour Rendering</b>	Ra>85
<b>MacAdam Ellipse</b>	3 Step
<b>UGR</b>	<19
<b>System Power</b>	Ranging From  15.07 W- 120.56 W
<b>Exit Lumens</b>	Ranging From  1,718 lm- 13,738 lm
<b>Efficiency</b>	~125.6 lm/cW
<b>Longevity</b>	L90 / B10 @ 50,000 hours
<b>Compliance</b>	Building Regulations ETL (Energy Technology List) ECA (Enhanced Capital Allowance) SKA Rating

### Available options

**Standalone Size** 574mm - 1,718lm - 12W, 714mm - 2,141lm - 15W, 854mm - 2,609lm - 18W, 993mm - 3,032lm - 21W, 1,133mm - 3,435lm - 24W, 1,273mm - 3,858lm - 27W, 1,412mm - 4,326lm - 30W, 1,552mm - 4,749lm - 33W, 1,692mm - 5,152lm - 36W, 1,832mm - 5,575lm - 39W, 1,971mm - 6,043lm - 42W, 2,111mm - 6,466lm - 45W, 2,251mm - 6,869lm - 48W, 2,391mm - 7,292lm - 51W, 2,530mm - 7,760lm - 54W, 2,670mm - 8,183lm - 57W, 2,810mm - 8,586lm - 60W, 2,950mm - 9,009lm - 63W, 3,090mm - 9,477lm - 66W, 3,230mm - 9,900lm - 68W, 3,370mm - 10,304lm - 73W, 3,510mm - 10,727lm - 75W, 3,649mm - 11,195lm - 79W, 3,789mm - 11,618lm - 81W, 3,929mm - 12,021lm - 84W, 4,069mm - 12,444lm - 87W, 4,208mm - 12,912lm - 90W, 4,348mm - 13,335lm - 93W, 4,488mm - 13,738lm - 96W, Bespoke Size

<b>Module</b>	Standalone, Start, Middle, End, Special
<b>Profile Colour</b>	Aluminium, Special RAL Colour
<b>Colour Temperature</b>	3000K, 4000K, 5000K, Red, Green, Blue, RGB
<b>Dimming</b>	Fixed Output, DALI Dimming, Switch Dimming, DSI Dimming
<b>Emergency</b>	Not Required, 3 Hour Facility, 3 Hour Self Test, 3 Hour Central Test, Central Battery System
<b>Sensor</b>	Not Required, PIR, Microwave

**Product Code: VTR-RCD-TL**