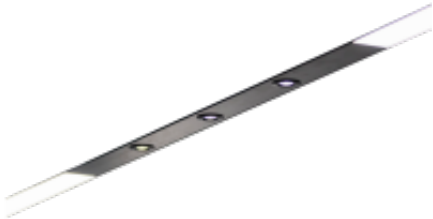


# LED UK

## Vector Cover

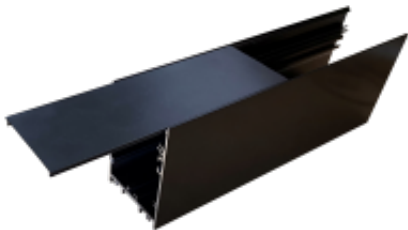
Vector Cover Plate acts as a system infill component which can be further utilised for the integration of miniature downlights, motion sensors and stand alone emergency fixtures such as the Egress & Optus luminaires.

- Aluminium Construction
- Spot Light Intergration
- Motion Detector Intergration
- Stand Alone Emergency Lighting Intergration
- Bespoke Lengths Prepared



### Available options

Length	Bespoke for application
Module	Surface System
	Suspended System
	Recessed System
Profile Colour	White
	Special Colour (Available on Request)



### Available options

Installation Type	Surface System, Suspended System, Recessed System
Colour	Aluminium, White
Length	Length
insert	None (Blank Plate Only), Spot Lights, Motion Detector, Stand Alone Emergency

**Product Code: VTR-COV**