

LED UK

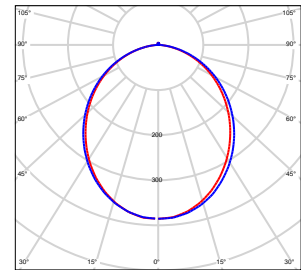
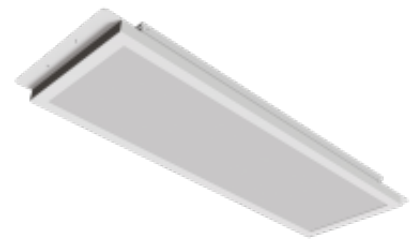
Tegra 299x1079

The Tegra LED panel is a bespoke modular luminaire designed to fit SAS330 ceilings. The body is made from powder coated steel giving a screwless appearance from under the ceiling. The diffuser is made from high efficiency PMMA which gives the luminaire optimum performance. The Tegra has a lifespan of over 50,000 hours and produces an efficacy of 111 lm/W.

- Architectural appearance - screwless smooth bezel
- High transmittant opal lens
- Instant on - no flicker
- Environmentally Friendly - No mercury or lead enters the environment
- No RF and electronic magnetic interference
- Over 50,000 hours life span

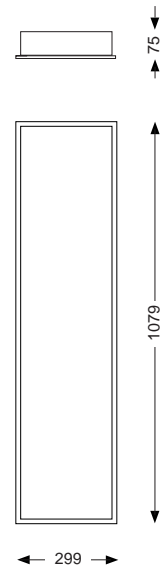
General

Dimensions	299 x 1079 x 75mm
Weight	6.5 kg
Installation	SAS330 Ceiling
Finish	Sheet Steel (RAL 9010)
Diffuser	High Transmission PMMA Opal
Voltage	220-240Vac 50/60Hz
Warranty	5 Years



Performance

Colour Rendering	Ra>80<19
MacAdam Ellipse	3 Step
UGR	<19
System Power	36.2 W
Exit Lumens	4,001 lm
Efficiency	110.5 ll/cW
Longevity	L90 / B10 @ 50,000 hours
Compliance	Building Regulations ETL (Energy Technology List) ECA (Enhanced Capital Allowance) SKA Rating



Tegra 299x1079

Available options

Tegulation	30mm Tegulation
Air Handling	Not Required, 10 litres/Second, 20 litres/Second, 30 litres/Second, 40 litres/Second
Gearbox	Integral, Remote, Integral GST Panel Plug, Remote GST Panel Plug, Integral with Special Flying Lead, Remote with Special Flying Lead
Colour Temperature	3000K, 4000K, 5000K
Gasket	Not Required, Gasket 1 Side, Gasket 2 Side, Gasket 3 Side, Gasket 4 Side
Dimming	Fixed output, 1-10V Dimming, DALI Dimming, Switch Dimming
Emergency	Not required, 3 Hour Facility, 3 Hour Self Test, 3 Hour Central Test, Central Battery System

Product Code: TEG-8-299X1079