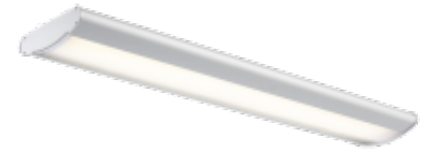


# LED UK

## Galaxy 1500

The Galaxy LED is an indoor linear luminaire which is available in 1500mm and is available as a 50W or 70W. The Body is made from extruded aluminium for a rigid robust finish with a polycarbonate diffuser. The Galaxy comes with a 5 year warranty as standard.



- 5 year warranty
- 50,000 hours
- Uniform illuminating surface: no led "dots"
- Maintenance free
- Mercury free, No UV or IR
- Instant start and flicker free

### General

Dimensions	1467x236x65mm
Installation	Ceiling Surface Ceiling Suspended
Voltage	220-240V 50/60Hz
Certification	CE, ROHS
Warranty	5 Years

### Performance

Power Factor	>0.9
Colour Rendering	Ra>80
Longevity	50,000 hours
System Power	50.2 W 70.1 W
Exit Lumens	4,369.0 lm 7,108.6 lm
Efficiency	87.1 lm/cW 101.4 lm/cW
Compliance	Building Regulations ETL (Energy Technology List) ECA (Enhanced Capital Allowance) SKA Rating

### Available options

Wattage	50W - 4,369 lm, 70W - 7,108 lm
Length	1500mm
Colour	3000K, 4000K, 6000K
Mounting Option	Surface, Suspended
Dimming	Fixed Output, 1-10V Dimming, DALI Dimmable
Emergency	Not required, 3 Hour Facility, 3 Hour Self Test, 3 Hour Central Test, Central Battery System

**Product Code: GLX**