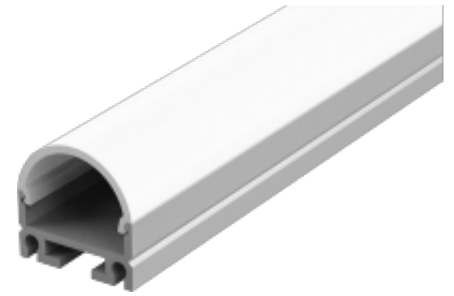


Domex

Domex is a continuous extrusion luminaire available in 1000mm to 5000mm linear lengths or as prepared bespoke fitting for your project requirements. Domex can be specified as either suspended or surface mounted. Domex is supplied with a Opal, Frosted or Clear diffuser which makes it ideal for architectural spaces. Domex Opal diffuser provides a dot free appearance across all wattages making the fitting suitable to be on display as an architectural feature. Domex is available as fixed output, dimmable or colour changing RGB.

- Aluminium profile
- Opal, Frosted or Clear polycarbonate diffuser
- Instant on - no flicker
- Environmentally Friendly - No mercury or lead enters the environment
- No RF and electronic magnetic interference
- Over 50,000 hours life span
- Supplied with Remote LED Driver
- Supplied with end caps & flying lead



General

Dimensions 19.5 x 19.2 x 1000mm to 5000mm
19.5 x 19.2 x Besoke Requirement (100mm Cuts)

Weight	0.5 kg per metre
Beam Angle	120°
Installation	Surface Mounted or Suspended
Voltage	220-240Vac
Certification	CE, ROHS
Warranty	3 Years

Performance

Colour Rendering	Ra>80
Longevity	50,000 hours
System Power	5.00 W/m 7.20 W/m 10.0 W/m 15.0 W/m
Lumens	490 lm/m 750 lm/m 950 lm/m 1350 lm/m
Compliance	Building Regulations ETL (Energy Technology List) ECA (Enhanced Capital Allowance) SKA Rating

Available options

Length	1000mm, 2000mm, 3000mm, 4000mm, Bespoke
Body Finish	Aluminium, White, Black
Colour Temperature	2700K, 3000K, 4000K, 6000K, RGB, RGBW
Diffuser	Opal, Frosted, Clear
Wattage	5W/m, 7.2W/m, 10W/m, 15W/m
Dimming	Fixed Output, 1-10V Dimming, DALI Dimmable, Mains Dimming, Switch Dimming, DMX

Product Code: DEX