

LED UK

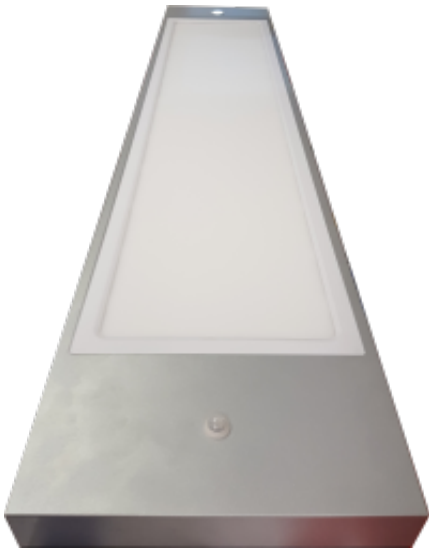
Chameleon Suspended

The Chameleon LED is a suspended mounted linear luminaire available in a single length of 1500mm or as a 3000mm twin version. Fitting is available with an integrated PIR or microwave sensor providing automatic switching facilities. Emergency options are also available including integrated stand alone non maintained solutions. Luminaire is fitted with 2 metre suspension cables as standard.

- Steel chasis profile
- Fitted with 2 Metre suspension
- Integrated sensor & emergency options
- Instant on - no flicker
- Environmentally Friendly - No mercury or lead enters the environment
- No RF and electronic magnetic interference
- Over 50,000 hours life span

General

Dimensions	1490 x 300 x 50mm 2980 x 300 x 50mm
Installation	Suspended
Voltage	100-240Vac 50/60Hz
Certification	CE, ROHS
Warranty	5 Years



Performance

Colour Rendering	Ra>80
Longevity	50,000 hours
System Power	29 W (1500mm) 58 W (3000mm)
Exit Lumens	29 W 3525 lm 58 W 7050 lm
Efficiency	~121.79 lm/cW
Compliance	Building Regulations ETL (Energy Technology List) ECA (Enhanced Capital Allowance) SKA Rating

Available options

Wattage	29W (1500mm), 58W (3000mm)
Body Finish	Black, Grey, Red, White, Special
Colour Temperature	3000K, 4000K, 6000K
Uplight	No Uplight, Uplight (Standard Uplight)
Dimming	Fixed, 1-10V Dimming, DALI, Switch Dimming, Special Driver
Emergency	Not Required, 3 Hour Maintained, 3 Hour Self Test, 3 Hour Central Test, 3 Hour Central Battery, 3 Hour Stand Alone
Sensor	Not Required, PIR

Product Code: CHA-SUS