

LED UK

Alcor Mini Surface

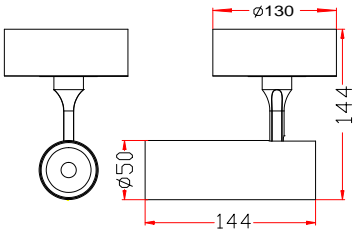
The Alcor Mini Surface is a Surface mounted compact luminaire finished in either Black or White. The fitting has a smooth finish and is available with a choice of beam angles, LED colours and lumen outputs. The Alcor uses a high quality die-cast aluminium heatsink for fast cooling to ensure performance and a long lifespan. This spotlight allows for a 350° horizontal rotation and a 0°-90° tilt for flexibility.

- Instant on - no flicker
- Environmentally Friendly - No mercury or lead enters the environment
- No RF and electronic magnetic interference
- Over 50,000 hours life span



General

Dimensions	50mm Diam x 144 L x 144 H
Installation	Surface
Beam Angle	15° 24° 36° 50°
Voltage	AC220-240V
Certification	CE, ROHS
Warranty	5 Years



Performance

Colour Rendering	Ra>82
Longevity	50,000 hours
System Power	7W
Exit Lumens	630
Efficiency	90.0 lm/cW
Compliance	Building Regulations ETL (Energy Technology List) ECA (Enhanced Capital Allowance) SKA Rating

Available options

Wattage	7W - 630lm
Base Colour	White, Black
Colour Temperature	3000K, 4000K
Lens	Clear, Honeycomb
Beam Angle	15°, 24°, 36°, 50°
Dimming	Fixed Output, 1-10V Dimming, DALI Dimmable, Mains Dimming, Switch Dimming

Product Code: ALC-M-S