

LED UK

Alcor Max Surface

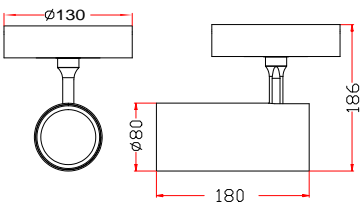
The Alcor Max Surface is a Surface mounted compact luminaire finished in either Black or White. The fitting has a smooth finish and is available with a choice of beam angles, LED colours and lumen outputs. The Alcor uses a high quality die-cast aluminium heatsink for fast cooling to ensure performance and a long lifespan. This spotlight allows for a 350° horizontal rotation and a 0°-90° tilt for flexibility.

- Instant on - no flicker
- Environmentally Friendly - No mercury or lead enters the environment
- No RF and electronic magnetic interference
- Over 50,000 hours life span



General

Dimensions	80mm Diam x 180 L x 186 H
Installation	Surface
Beam Angle	15°
	20°
	36°
	45°
Voltage	AC220-240V
Certification	CE, ROHS
Warranty	5 Years



Performance

Colour Rendering	Ra>82
Longevity	50,000 hours
System Power	20 W
	30 W
Exit Lumens	1800 lm
	2700 lm
Efficiency	90.0 l/cW
Compliance	Building Regulations
	ETL (Energy Technology List)
	ECA (Enhanced Capital Allowance)
	SKA Rating

Available options

Wattage	20W - 1800lm, 30W - 2700lm
Base Colour	White, Black
Colour Temperature	3000K, 4000K
Lens	Clear, Honeycomb
Beam Angle	15°, 20°, 36°, 45°
Dimming	Fixed Output, 0-10 Dimmable, DALI Dimmable, Mains Dimming, Switch Dimming

Product Code: ALC-X-S