

# LED UK

## Track 3C

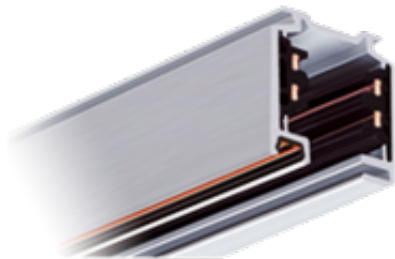
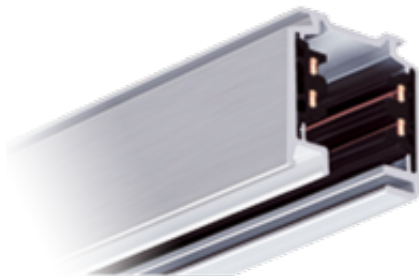
Track system for three circuits suitable for surface or suspension. Constructed from extruded aluminium profile and two PVC support profiles, each with two imbedded 2.5 mm<sup>2</sup> cross section copper conductors. Designed for three independent switchable circuits. Earthing through the aluminium profile. Easy on site cutting with a standard saw, no cutting back or bending back of conductors necessary. The track has pre-punched slotted holes and may be used within arm's reach. Track 3C adapters with data bus contacts can be used in tracks without the data bus but in this case, data functionality is not available.

- Available in 1Mtr, 2Mtr or 3Mtr Lengths
- Extruded Aluminium
- Range of Colours
- 2.5mm Copper Conductors
- Full Range of Mounting & Connection Accesories
- DALI or Fixed Output

A full range of connection & mounting accessories are available on request.

### General

|               |  |
|---------------|--|
| Dimensions    | 1 Mtr, 36mm x 32mm<br>2 Mtr, 36mm x 32mm<br>3 Mtr, 36mm x 32mm   |
| Installation  | Surface Mounted  |
| Voltage       | 100-240Vac 50/60Hz   |
| Certification | CE, ROHS   |
| Warranty      | 5 Years  |
| Compliance    | Building Regulations<br>ETL (Energy Technology List)<br>ECA (Enhanced Capital Allowance)<br>SKA Rating |



### Available options

|                 |                                       |
|-----------------|---------------------------------------|
| Mounting Option | Surface Mounting, Suspended, Recessed |
| Size            | 1000mm , 2000mm, 3000mm, Bespoke Size |
| Profile Colour  | White, Black                          |
| Dimming         | Fixed Output, DALI Dimming            |

Product Code: TRK

