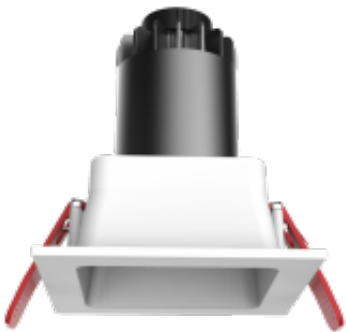


LED UK

Taurus Square Mini

The Taurus Square Mini is a 90 x 90mm recessed downlight which uses a CREE LED engine. The heatsink is constructed from die-cast aluminium complete with aluminium bezel and reflector. The heatsink features spring arms which allows the downlight to be installed with ease. The Taurus is available in outputs from 520lm to 650lm.

- Instant on - no flicker
- Environmentally Friendly - No mercury or lead enters the environment
- No RF and electronic magnetic interference
- Over 50,000 hours life span



General

Dimensions	90 x 90 x 100mm
Cutout	80 x 80mm
Installation	Recessed
Beam Angle	15° 24° 30° 36°
Voltage	AC220-240V
Certification	CE, ROHS
Warranty	5 Years

Performance

Colour Rendering	Ra>80
Longevity	50,000 hours
System Power	8 W 10 W
Exit Lumens	520 lm 650 lm
Efficiency	65.0 lm/cw 65.0 lm/cw
Compliance	Building Regulations ETL (Energy Technology List) ECA (Enhanced Capital Allowance) SKA Rating

Available options

Wattage	8W - 520 lm, 10W - 650 lm
Colour	3000K, 4000K, 6000K
Bezel	Open
Dimming	Fixed Output, DALI Dimmable
Emergency	Not required, 3 Hour Facility

Product Code: TSQ-M