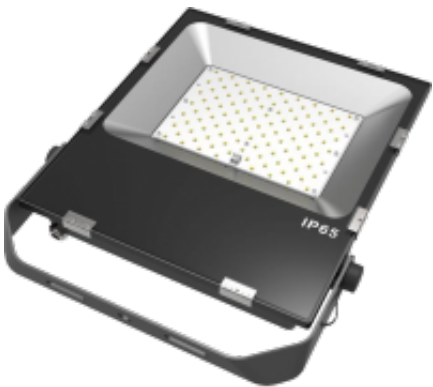


# LED UK

## Regus 100W

The Regus 100W is constructed from an aluminium moulding with the LED chips displayed in a standard array pattern. This creates optimum passive heatsinking as air travels over the fins on the heatsink. The Regus has an IP65 rating.

- Osram LED engine
- IP65 rated
- Aluminium body
- Environmentally Friendly - No mercury or lead enters the environment
- No RF and electronic magnetic interference
- Over 50,000 hours life span
- Beam Angle 120°



### General

|               |                    |
|---------------|--------------------|
| Dimensions    | 295 x 403.5 x 60mm |
| Weight        | 5.8 kg             |
| Installation  | Bracket mounted    |
| Voltage       | 85-277Vac 50/60Hz  |
| Certification | CE, ROHS           |
| Warranty      | 5 Years            |

### Performance

|                       |  |
|-----------------------|--|
| IP Rating             | IP65   |
| Operating Temperature | -20°C - 60°C   |
| Colour Rendering      | Ra>80  |
| Longevity             | 50,000 hours   |
| System Power          | 103.4 W  |
| Exit Lumens           | 13,002 lm  |
| Efficiency            | 125.7 lm/cW  |
| Compliance            | Building Regulations<br>ETL (Energy Technology List)<br>ECA (Enhanced Capital Allowance)<br>SKA Rating |

### Available options

|         |  |
|---------|--|
| Wattage | 100W                                       |
| Colour  | 3000K, 4000K, 6000K                        |
| Dimming | Fixed Output, 1-10V Dimmable, DALI Dimming |

Product Code: RGS