

LED UK

Draco Nano

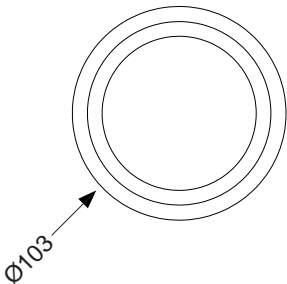
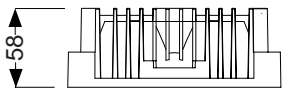
The Draco Nano LED is a 103mm diameter downlight which uses a Cree XP-E LED Array. The heatsink is constructed from die-cast aluminium complete with aluminium bezel and polished reflector. The downlight is available with 780lm and as standard is rated IP20.

- CREE LED Engine
- Cast Aluminium
- Instant on - no flicker
- Environmentally Friendly - No mercury or lead enters the environment
- No RF and electronic magnetic interference
- Over 50,000 hours life span



General

Dimensions	Ø103 x 51mm
Cutout	Ø90mm
Installation	Ceiling Tile Plasterboard
Beam Angle	30° / 45° / 75°
Voltage	AC220-240V
Certification	CE, ROHS
Warranty	5 Years



Performance

Colour Rendering	Ra>80/90
Longevity	50,000 hours
System Power	9 W
Exit Lumens	720 lm
Efficiency	86 lm/W
Compliance	Building Regulations ETL (Energy Technology List) ECA (Enhanced Capital Allowance) SKA Rating

Available options

Wattage	9W - 780 lm
Colour	White, Special RAL Colour
Colour Temperature	3000K, 4000K, 5000K
Beam Angle	30°, 45°, 75°
Dimming	Fixed Output, 1-10v Dimming, DALI Dimmable, Mains Dimming, Swith Dimming
Emergency	Not required, 3 Hour Facility, 3 Hour Self Test, 3 Hour Central Test, Central Battery System

Product Code: DRC-N