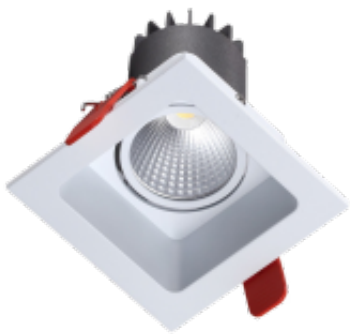


# Alta Square Mini Adjustable

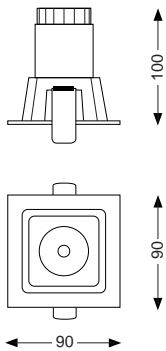
The Alta Square Mini Adjustable LED is a 90 x 90mm square downlight which uses a CREE XP-E LED engine. The heatsink is constructed from die-cast aluminium complete with aluminium bezel and reflector. The bezel features a 40mm recess detail creating a glare friendly cutoff which is also an aesthetically pleasing architectural detail. The Alta Square Mini Adjustable is available in a 937lm output with 15°, 24°, 30° and 36° beam angle options and is rated IP20.

- CREE LED Engine
- Cast Aluminium
- Instant on - no flicker
- Environmentally Friendly - No mercury or lead enters the environment
- No RF and electronic magnetic interference
- Over 50,000 hours life span



## General

Dimensions	90 x 90 x 100mm
Cutout	80 x 80mm
Weight	0.2kg
Installation	Ceiling Tile Plasterboard
Voltage	220-240Vac
Certification	CE, ROHS
Warranty	5 Years



## Performance

Colour Rendering	Ra>82
Longevity	50,000 hours
System Power	10 W
Exit Lumens	937lm
Efficiency	94.00 lm/cW
Compliance	Building Regulations ETL (Energy Technology List) ECA (Enhanced Capital Allowance) SKA Rating

# Alta Square Mini Adjustable

---

## Available options

Wattage	10W - 937lm
Colour	White, Special RAL Colour
Colour Temperature	3000K, 4000K, 5000K
Beam Angle	15° Beam, 24° Beam, 30° Beam, 36° Beam
Lens	Clear
Dimming	Fixed Output, 1-10V Dimming, DALI Dimming, Mains Dimming, Switch Dimming
Emergency	Not Available

Product Code: ALS-M-A